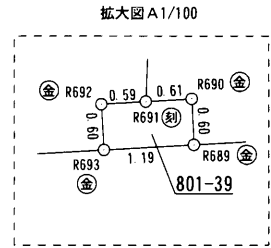
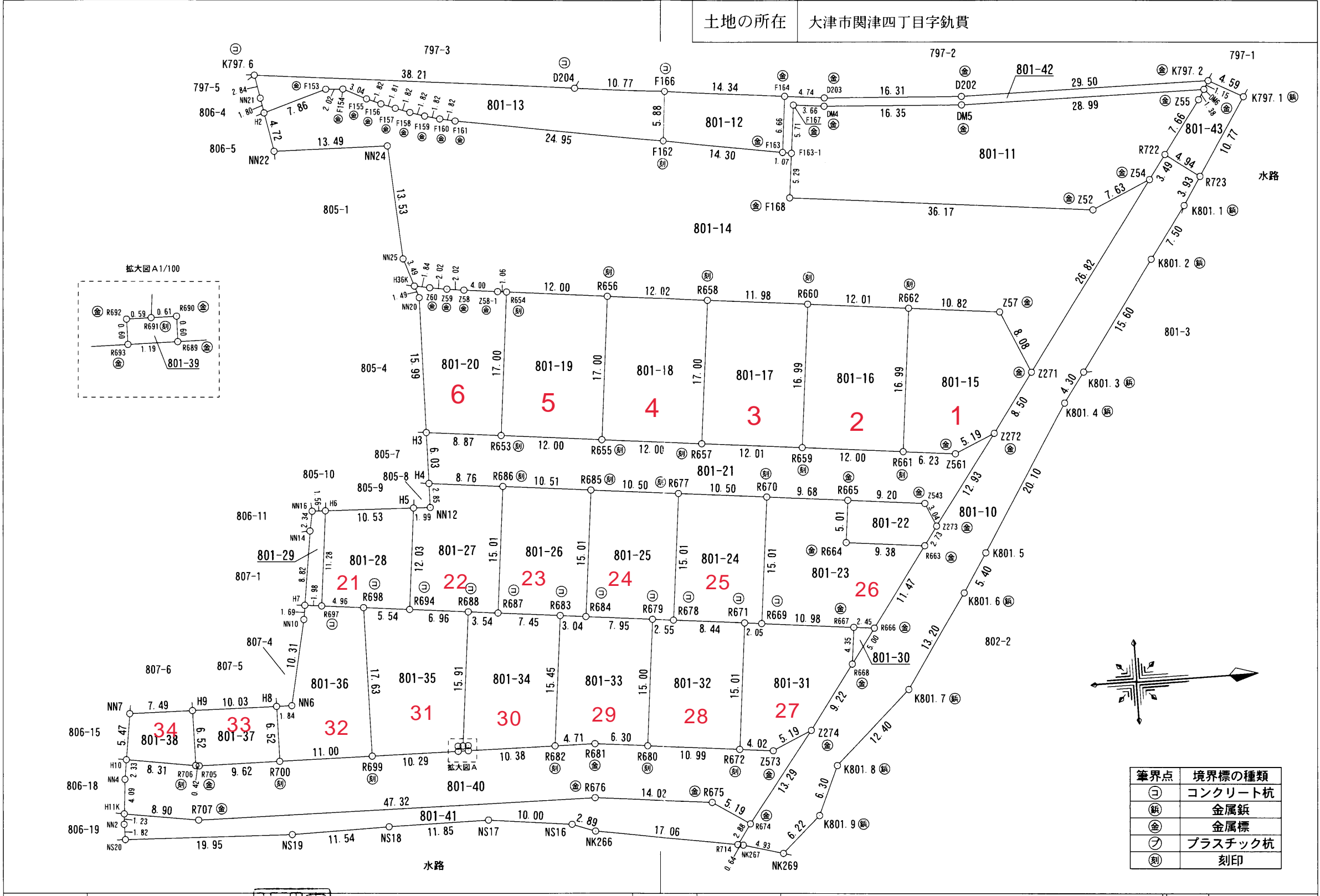


地番	801-10~801-43
土地の所在	大津市関津四丁目字鉾貫

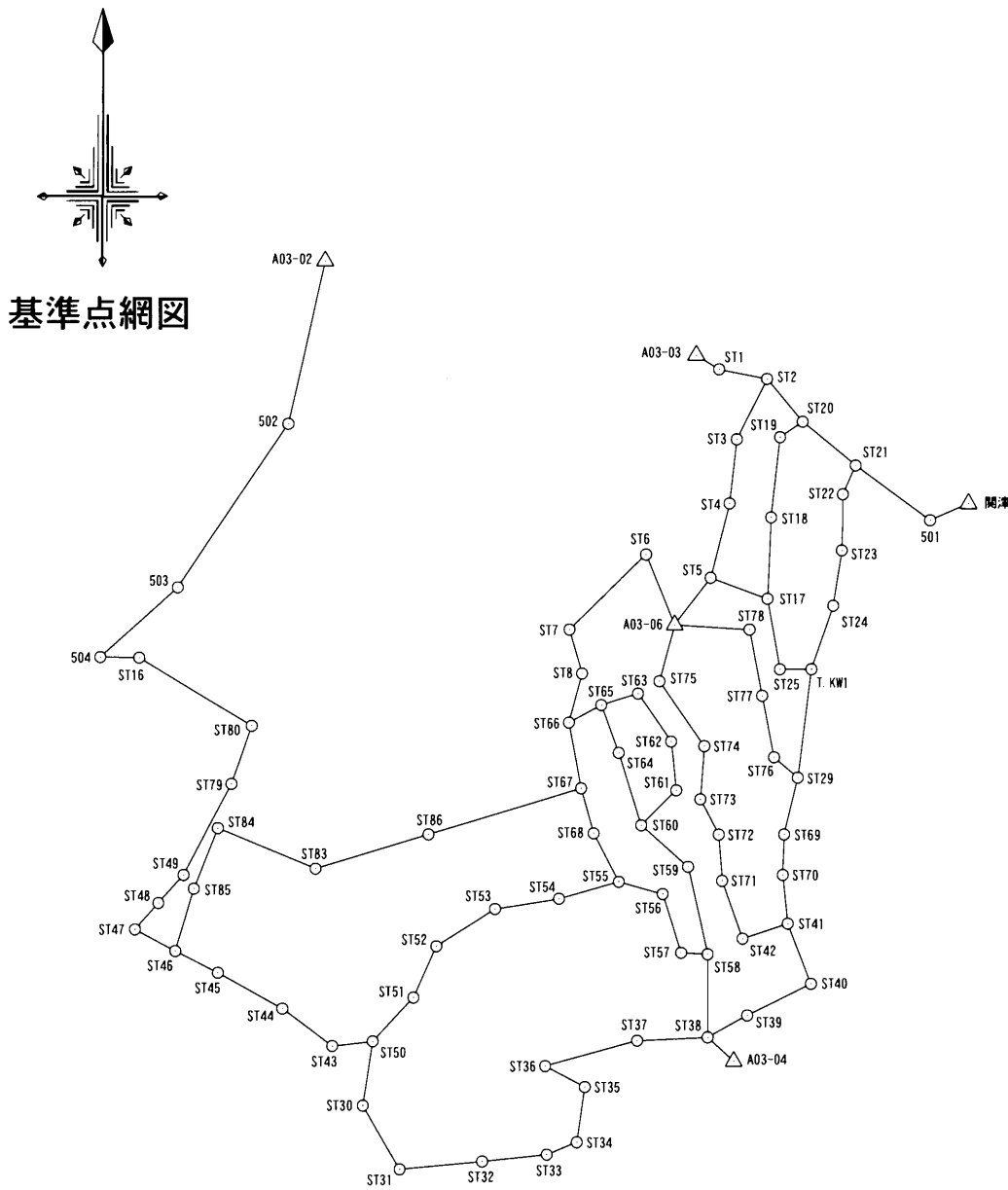
地積測量図 1/8



作成者	大津市丸の内町2番11号 フレアジェイA-3 土地家屋調査士 井門 貴明 (平成 29 年 6 月 2 日作成)	申請人	株式会社フジタ 代表取締役 奥村洋治	縮尺	1 / 500
-----	---	-----	-----------------------	----	---------

地番	801-10~801-43	<b>地積測量図</b> <span style="border: 1px solid black; border-radius: 50%; padding: 2px;">2/8</span>
土地の所在	大津市関津四丁目字鈺貫	

点名	X座標	Y座標	備考
501	-118426.991	-6269.826	補助基準点
502	-118362.324	-6705.406	補助基準点
503	-118472.620	-6780.102	補助基準点
504	-118519.575	-6833.077	補助基準点
A03-02	-118252.377	-6680.551	3級基準点
A03-03	-118315.905	-6428.433	3級基準点
A03-04	-118791.881	-6403.160	3級基準点
A03-06	-118497.598	-6443.006	3級基準点
ST1	-118325.360	-6413.031	補助基準点
ST2	-118331.843	-6380.590	補助基準点
ST3	-118372.507	-6401.070	補助基準点
ST4	-118415.714	-6405.943	補助基準点
ST5	-118465.848	-6418.777	補助基準点
ST6	-118450.190	-6462.406	補助基準点
ST7	-118500.840	-6514.675	補助基準点
ST8	-118530.481	-6506.146	補助基準点
ST16	-118520.027	-6806.498	補助基準点
ST17	-118479.996	-6380.332	補助基準点
ST18	-118425.110	-6377.873	補助基準点
ST19	-118371.032	-6371.774	補助基準点
ST20	-118360.616	-6356.221	補助基準点
ST21	-118390.021	-6320.061	補助基準点
ST22	-118409.541	-6328.834	補助基準点
ST23	-118447.375	-6329.553	補助基準点
ST24	-118484.674	-6335.507	補助基準点
ST25	-118527.566	-6371.865	補助基準点
ST29	-118600.680	-6359.643	補助基準点
ST30	-118822.014	-6654.980	補助基準点
ST31	-118864.909	-6629.779	補助基準点
ST32	-118859.624	-6573.982	補助基準点
ST33	-118855.002	-6530.340	補助基準点
ST34	-118846.660	-6509.777	補助基準点
ST35	-118809.347	-6504.361	補助基準点
ST36	-118795.297	-6531.401	補助基準点
ST37	-118778.034	-6468.527	補助基準点
ST38	-118775.755	-6420.826	補助基準点
ST39	-118760.951	-6394.041	補助基準点
ST40	-118739.616	-6350.696	補助基準点
ST41	-118699.072	-6366.548	補助基準点
ST42	-118709.224	-6397.179	補助基準点
ST43	-118781.856	-6675.688	補助基準点
ST44	-118756.659	-6709.497	補助基準点
ST45	-118732.554	-6752.797	補助基準点
ST46	-118717.831	-6781.828	補助基準点
ST47	-118703.238	-6809.504	補助基準点
ST48	-118685.447	-6793.396	補助基準点
ST49	-118666.531	-6776.120	補助基準点
ST50	-118778.696	-6648.116	補助基準点
ST51	-118749.098	-6620.267	補助基準点
ST52	-118714.463	-6604.623	補助基準点
ST53	-118689.314	-6565.140	補助基準点
ST54	-118682.381	-6521.789	補助基準点
ST55	-118670.896	-6480.992	補助基準点



作成者	大津市丸の内町2番11号 フレアジェイA-3	申請人	株式会社フジタ	縮尺	1 / 5000
	土地家屋調査士 井門 豊明 (平成 29 年 6 月 2 日作成)		代表取締役 奥村 洋治		

地番	801-10~801-43	<b>地積測量図</b> <span style="border: 1px solid black; border-radius: 50%; padding: 2px;">3/8</span>
土地の所在	大津市関津四丁目字鈞貫	

点名	X座標	Y座標	備考
ST56	-118679.108	-6451.131	補助基準点
ST57	-118718.731	-6438.679	補助基準点
ST58	-118719.727	-6420.791	補助基準点
ST59	-118660.743	-6433.932	補助基準点
ST60	-118632.812	-6465.671	補助基準点
ST61	-118609.176	-6441.930	補助基準点
ST62	-118576.312	-6445.362	補助基準点
ST63	-118543.979	-6467.856	補助基準点
ST64	-118583.970	-6481.025	補助基準点
ST65	-118551.760	-6493.006	補助基準点
ST66	-118563.591	-6514.999	補助基準点
ST67	-118607.946	-6506.796	補助基準点
ST68	-118638.254	-6498.244	補助基準点
ST69	-118638.901	-6369.053	補助基準点
ST70	-118666.214	-6369.958	補助基準点
ST71	-118670.189	-6411.043	補助基準点
ST72	-118639.045	-6413.323	補助基準点
ST73	-118615.245	-6425.735	補助基準点
ST74	-118579.379	-6423.029	補助基準点
ST75	-118535.634	-6453.345	補助基準点
ST76	-118586.868	-6375.902	補助基準点
ST77	-118545.430	-6383.954	補助基準点
ST78	-118500.770	-6392.409	補助基準点
ST79	-118605.097	-6743.699	補助基準点
ST80	-118565.872	-6729.977	補助基準点
ST83	-118662.176	-6687.112	補助基準点
ST84	-118634.935	-6752.819	補助基準点
ST85	-118675.754	-6769.132	補助基準点
ST86	-118639.039	-6609.960	補助基準点
T.KW1	-118527.504	-6350.380	補助基準点
関津	-118415.701	-6243.945	四等三角点

引照点	名称	X座標	Y座標
A03-03	3級基準点(金属標)	-118315.905	-6428.433
関津	四等三角点(石標)	-118415.701	-6243.945

引照点	境界点	距離
A03-03	K797.2	22.43
A03-03	R714	128.57
関津	K797.2	188.83
関津	R714	85.82

測量年月日	平成29年 2月13日
座標系	世界測地系 VI系

求積表

地番		801-10			
NO	Xn	Yn	Yn+1-Yn-1	Xn · (Yn+1-Yn-1)	
R722	-118338.514	-6405.188	0.062	-7336.987868	
R723	-118334.510	-6402.294	6.207	-734502.303570	
K801.1	-118336.632	-6398.981	9.382	-1110234.281424	
K801.2	-118341.047	-6392.912	18.812	-2226231.776164	
K801.3	-118350.052	-6380.169	16.232	-1921058.044064	
K801.4	-118352.572	-6376.680	20.495	-2425635.963140	
K801.5	-118363.294	-6359.674	21.569	-2552977.888286	
K801.6	-118366.190	-6355.111	15.502	-1834912.677380	
K801.7	-118373.585	-6344.172	19.312	-2286030.673520	
K801.8	-118382.736	-6335.799	14.142	-1674168.652512	
K801.9	-118385.277	-6330.030	9.926	-1175092.259502	
NK269	-118389.916	-6325.873	2.829	-334925.072364	
NK267	-118394.666	-6327.201	-1.435	169896.345710	
R714	-118395.306	-6327.308	-2.444	289358.127864	
R674	-118393.622	-6329.645	-12.873	1524081.096006	
Z274	-118385.508	-6340.181	-18.017	2132951.697636	
R668	-118380.102	-6347.662	-11.541	1366224.757182	
R666	-118377.168	-6351.722	-13.362	1581755.718816	
R663	-118370.448	-6361.024	-11.518	1363390.820064	
Z273	-118368.846	-6363.240	-12.693	1502455.762278	
Z272	-118361.256	-6373.717	-17.373	2056290.100488	
Z271	-118356.273	-6380.613	-28.639	3389605.302447	
Z54	-118340.561	-6402.356	-24.575	2908219.286575	
合計				1122.435272	
合計面積				561.2176360	
地積				561.21 m <sup>2</sup>	

地番		801-11			
NO	Xn	Yn	Yn+1-Yn-1	Xn · (Yn+1-Yn-1)	
DM6	-118333.302	-6412.578	-1.437	170044.954974	
DM5	-118362.291	-6412.835	-1.264	149609.935824	
DM4	-118378.614	-6413.842	-1.414	167387.360196	
F167	-118382.256	-6414.249	5.274	-624348.018144	
F163-1	-118382.896	-6408.568	10.943	-1295464.030928	
F168	-118383.488	-6403.306	9.305	-1101558.355840	
Z52	-118347.543	-6399.263	0.950	-112430.165850	
Z54	-118340.561	-6402.356	-5.925	701167.823925	
R722	-118338.514	-6405.188	-9.042	1070016.843588	
Z55	-118334.021	-6411.398	-7.390	874488.415190	
合計				-1085.237065	
合計面積				542.6185325	
地積				542.61 m <sup>2</sup>	

作成者	大津市丸の内2番01号 フレアジェイA-3 土地家屋調査士 井門 寛典 (平成 29 年 6 月 2 日作成)	申請人	株式会社フジタ 代表取締役 奥村洋治	縮尺	1/
-----	--	-----	-----------------------	----	----

地番	801-10~801-43	地積測量図 <span style="border: 1px solid black; border-radius: 50%; padding: 2px;">4/8</span>
土地の所在	大津市関津四丁目字鈺貫	

地番	801-12			
NO	Xn	Yn	Yn+1-Yn-1	Xn · (Yn+1-Yn-1)
F164	-118383.230	-6415.370	-8.245	976069.731350
F166	-118397.481	-6416.992	4.239	-501886.921959
F162	-118398.063	-6411.131	8.245	-976192.029435
F163	-118383.957	-6408.747	-4.239	501829.593723
合計				-179.626321
合計面積				89.8131605
地積				89.81 m <sup>2</sup>

地番	801-13			
NO	Xn	Yn	Yn+1-Yn-1	Xn · (Yn+1-Yn-1)
F166	-118397.481	-6416.992	-7.079	838135.767999
D204	-118408.187	-6418.210	-5.484	649350.497508
K797.6	-118446.160	-6422.476	-1.473	174471.193680
NN21	-118445.638	-6419.683	4.564	-540585.891832
H2	-118445.307	-6417.912	-0.493	58393.536351
F153	-118437.780	-6420.176	-2.135	252864.660300
F154	-118435.757	-6420.047	1.500	-177653.635500
F155	-118433.042	-6418.676	2.087	-247169.758654
F156	-118431.365	-6417.960	1.363	-161421.950495
F157	-118429.671	-6417.313	1.262	-149458.244802
F158	-118427.952	-6416.698	1.175	-139152.843600
F159	-118426.217	-6416.138	1.031	-122097.429727
F160	-118424.458	-6415.667	0.850	-100660.789300
F161	-118422.668	-6415.288	4.536	-537165.222048
F162	-118398.063	-6411.131	-1.704	201750.299352
合計				-399.810768
合計面積				199.9053840
地積				199.90 m <sup>2</sup>

地番	801-14			
NO	Xn	Yn	Yn+1-Yn-1	Xn · (Yn+1-Yn-1)
F153	-118437.780	-6420.176	-2.135	252864.660300
F154	-118435.757	-6420.047	1.500	-177653.635500
F155	-118433.042	-6418.676	2.087	-247169.758654
F156	-118431.365	-6417.960	1.363	-161421.950495
F157	-118429.671	-6417.313	1.262	-149458.244802
F158	-118427.952	-6416.698	1.175	-139152.843600
F159	-118426.217	-6416.138	1.031	-122097.429727
F160	-118424.458	-6415.667	0.850	-100660.789300
F161	-118422.668	-6415.288	4.536	-537165.222048
F162	-118398.063	-6411.131	6.541	-774441.730083
F163	-118383.957	-6408.747	2.563	-303418.081791
F163-1	-118382.896	-6408.568	5.441	-644121.337136
F168	-118383.488	-6403.306	9.305	-1101558.355840
Z52	-118347.543	-6399.263	0.950	-112430.165850
Z54	-118340.561	-6402.356	18.650	-2207051.462650
Z271	-118356.273	-6380.613	14.354	-1698885.942642
Z57	-118359.555	-6388.002	-8.607	1018720.689885
R662	-118370.316	-6389.220	-2.567	303856.601172
R660	-118382.252	-6390.569	-2.696	319158.551392
R658	-118394.166	-6391.916	-2.698	319427.459868
R656	-118406.111	-6393.267	-2.700	319696.499700
R654	-118418.041	-6394.616	-1.469	173956.102229
Z58-1	-118419.099	-6394.736	-0.579	68564.658321
Z58	-118423.077	-6395.195	-0.727	86093.576979
Z59	-118425.084	-6395.463	-0.584	69160.249056
Z60	-118427.089	-6395.779	-0.652	77214.462028
H36K	-118428.906	-6396.115	-3.644	431554.933464
NN25	-118430.027	-6399.423	-16.816	1991519.334032
NN24	-118430.944	-6412.931	-13.842	1639321.126848
NN22	-118444.439	-6413.265	-4.981	589971.750659
H2	-118445.307	-6417.912	-6.911	818575.516677
合計				2969.222492
合計面積				1484.6112460
地積				1484.61 m <sup>2</sup>

地番	801-15			
NO	Xn	Yn	Yn+1-Yn-1	Xn · (Yn+1-Yn-1)
Z271	-118356.273	-6380.613	-14.285	1690719.359805
Z57	-118359.555	-6388.002	-8.607	1018720.689885
R662	-118370.316	-6389.220	15.674	-1855336.332984
R661	-118372.207	-6372.328	17.591	-2082285.493337
Z561	-118366.012	-6371.629	-1.389	164410.390668
Z272	-118361.256	-6373.717	-8.984	1063357.523904
合計				-413.862059
合計面積				206.9310295
地積				206.93 m <sup>2</sup>

作成者	大津市丸の内区関津四丁目字鈺貫 フレアジェイA-3	申請人	株式会社フジタ	縮尺	1/
	土地家屋調査士 井門 貴明		代表取締役 奥村洋治		

(平成 29 年 6 月 2 日作成)

地番	801-10~801-43	地積測量図 <span style="border: 1px solid black; border-radius: 50%; padding: 2px;">5/8</span>
土地の所在	大津市関津四丁目字鈺貫	

地番	801-16			
NO	Xn	Yn	Yn+1-Yn-1	Xn · (Yn+1-Yn-1)
R662	-118370.316	-6389.220	-18.241	2159192.934156
R660	-118382.252	-6390.569	15.546	-1840370.489592
R659	-118384.136	-6373.674	18.241	-2159445.024776
R661	-118372.207	-6372.328	-15.546	1840214.330022
合計				-408.250190
合計面積				204.1250950
地積				204.12 m <sup>2</sup>

地番	801-17			
NO	Xn	Yn	Yn+1-Yn-1	Xn · (Yn+1-Yn-1)
R660	-118382.252	-6390.569	-18.242	2159529.040984
R658	-118394.166	-6391.916	15.549	-1840910.887134
R657	-118396.071	-6375.020	18.242	-2159781.127182
R659	-118384.136	-6373.674	-15.549	1840754.930664
合計				-408.042668
合計面積				204.0213340
地積				204.02 m <sup>2</sup>


地番	801-18			
NO	Xn	Yn	Yn+1-Yn-1	Xn · (Yn+1-Yn-1)
R658	-118394.166	-6391.916	-18.247	2160338.347002
R656	-118406.111	-6393.267	15.550	-1841215.026050
R655	-118407.999	-6376.366	18.247	-2160590.757753
R657	-118396.071	-6375.020	-15.550	1841058.904050
合計				-408.532751
合計面積				204.2663755
地積				204.26 m <sup>2</sup>

地番	801-19			
NO	Xn	Yn	Yn+1-Yn-1	Xn · (Yn+1-Yn-1)
R656	-118406.111	-6393.267	-18.250	2160911.525750
R654	-118418.041	-6394.616	15.555	-1841992.627755
R653	-118419.930	-6377.712	18.250	-2161163.722500
R655	-118407.999	-6376.366	-15.555	1841836.424445
合計				-408.400060
合計面積				204.2000300
地積				204.20 m <sup>2</sup>

地番	801-20			
NO	Xn	Yn	Yn+1-Yn-1	Xn · (Yn+1-Yn-1)
R654	-118418.041	-6394.616	-17.024	2015948.729984
Z58-1	-118419.099	-6394.736	-0.579	68564.658321
Z58	-118423.077	-6395.195	-0.727	86093.576979
Z59	-118425.084	-6395.463	-0.584	69160.249056
Z60	-118427.089	-6395.779	-0.652	77214.462028
H36K	-118428.906	-6396.115	1.082	-128140.076292
NN20	-118428.426	-6394.697	17.408	-2061602.039808
H3	-118428.752	-6378.707	16.985	-2011512.352720
R653	-118419.930	-6377.712	-15.909	1883942.666370
合計				-330.126082
合計面積				165.0630410
地積				165.06 m <sup>2</sup>

地番	801-21			
NO	Xn	Yn	Yn+1-Yn-1	Xn · (Yn+1-Yn-1)
Z272	-118361.256	-6373.717	8.389	-992932.576584
Z273	-118368.846	-6363.240	7.689	-910138.056894
Z543	-118370.061	-6366.028	-3.821	452292.003081
R665	-118379.210	-6367.061	-2.120	250963.925200
R670	-118388.835	-6368.148	-2.266	268269.100110
R677	-118399.276	-6369.327	-2.358	279185.492808
R685	-118409.719	-6370.506	-2.359	279328.527121
R686	-118420.163	-6371.686	-2.163	256142.812569
H4	-118428.876	-6372.669	-7.021	831489.138396
H3	-118428.752	-6378.707	-5.043	597236.196336
R653	-118419.930	-6377.712	2.341	-277221.056130
R655	-118407.999	-6376.366	2.692	-318754.333308
R657	-118396.071	-6375.020	2.692	-318722.223132
R659	-118384.136	-6373.674	2.692	-318690.094112
R661	-118372.207	-6372.328	2.045	-242071.163315
Z561	-118366.012	-6371.629	-1.389	164410.390668
合計				788.082814
合計面積				394.0414070
地積				394.04 m <sup>2</sup>

地番	801-22			
NO	Xn	Yn	Yn+1-Yn-1	Xn · (Yn+1-Yn-1)
Z543	-118370.061	-6366.028	-3.821	452292.003081
R665	-118379.210	-6367.061	3.952	-467834.637920
R664	-118379.774	-6362.076	6.037	-714658.695638
R663	-118370.448	-6361.024	-1.164	137783.201472
Z273	-118368.846	-6363.240	-5.004	592317.705384
合計				-100.423621
合計面積				50.2118105
地積				50.21 m <sup>2</sup>

作成者	大津市丸の内2番11丁目 土地家屋調査士 井門 義明 	フレアジェイA-3 (平成 29 年 6 月 2 日作成)	申請人	株式会社フジタ 代表取締役 奥村洋治	縮尺	1/
-----	--	----------------------------------	-----	-----------------------	----	----

地番	801-10~801-43	地積測量図 <span style="border: 1px solid black; border-radius: 50%; padding: 2px;">6/8</span>
土地の所在	大津市関津四丁目字鈺貫	

地番	801-23			
NO	Xn	Yn	Yn+1-Yn-1	Xn · (Yn+1-Yn-1)
R663	-118370.448	-6361.024	10.354	-1225607.618592
R666	-118377.168	-6351.722	9.036	-1069656.090048
R667	-118379.612	-6351.988	-1.504	178042.936448
R669	-118390.530	-6353.226	-16.160	1913190.964800
R670	-118388.835	-6368.148	-13.835	1637909.532225
R665	-118379.210	-6367.061	6.072	-718798.563120
R664	-118379.774	-6362.076	6.037	-714658.695638
合計				422.466075
合計面積				211.2330375
地積				211.23 m <sup>2</sup>

地番	801-27			
NO	Xn	Yn	Yn+1-Yn-1	Xn · (Yn+1-Yn-1)
R686	-118420.163	-6371.686	15.906	-1883591.112678
R687	-118421.845	-6356.763	14.525	-1720077.298625
R688	-118425.363	-6357.161	-1.179	139623.502977
R694	-118432.284	-6357.942	-12.739	1508708.865876
H5	-118430.932	-6369.900	-11.876	1406485.748432
NN12	-118428.934	-6369.818	-2.769	327929.718246
H4	-118428.876	-6372.669	-1.868	221225.140368
合計				304.564596
合計面積				152.2822980
地積				152.28 m <sup>2</sup>

地番	801-24			
NO	Xn	Yn	Yn+1-Yn-1	Xn · (Yn+1-Yn-1)
R670	-118388.835	-6368.148	16.101	-1906178.632335
R669	-118390.530	-6353.226	14.691	-1739275.276230
R671	-118392.572	-6353.457	-1.179	139584.842388
R678	-118400.968	-6354.405	-15.870	1879023.362160
R677	-118399.276	-6369.327	-13.743	1627161.250068
合計				315.546051
合計面積				157.7730255
地積				157.77 m <sup>2</sup>

地番	801-28			
NO	Xn	Yn	Yn+1-Yn-1	Xn · (Yn+1-Yn-1)
H5	-118430.932	-6369.900	12.388	-1467122.385616
R694	-118432.284	-6357.942	11.336	-1342548.371424
R698	-118437.789	-6358.564	-1.179	139638.153231
R697	-118442.723	-6359.121	-11.766	1393597.078818
H6	-118441.458	-6370.330	-10.779	1276680.475782
合計				244.950791
合計面積				122.4753955
地積				122.47 m <sup>2</sup>

地番	801-25			
NO	Xn	Yn	Yn+1-Yn-1	Xn · (Yn+1-Yn-1)
R677	-118399.276	-6369.327	-16.101	1906346.742876
R685	-118409.719	-6370.506	13.743	-1627304.768217
R684	-118411.407	-6355.584	15.814	-1872557.990298
R679	-118403.502	-6354.692	1.179	-139597.728858
R678	-118400.968	-6354.405	-14.635	1732798.166680
合計				-315.577817
合計面積				157.7889085
地積				157.78 m <sup>2</sup>

地番	801-29			
NO	Xn	Yn	Yn+1-Yn-1	Xn · (Yn+1-Yn-1)
H6	-118441.458	-6370.330	11.273	-1335190.556034
R697	-118442.723	-6359.121	10.986	-1301211.754878
H7	-118444.695	-6359.344	-8.961	1061382.911895
NN14	-118443.441	-6368.082	-11.050	1308800.023050
NN16	-118443.022	-6370.394	-2.248	266259.913456
合計				40.537489
合計面積				20.2687445
地積				20.26 m <sup>2</sup>

地番	801-26			
NO	Xn	Yn	Yn+1-Yn-1	Xn · (Yn+1-Yn-1)
R685	-118409.719	-6370.506	-16.102	1906633.295338
R686	-118420.163	-6371.686	13.743	-1627448.300109
R687	-118421.845	-6356.763	15.760	-1866328.277200
R683	-118414.433	-6355.926	1.179	-139610.616507
R684	-118411.407	-6355.584	-14.580	1726438.314060
合計				-315.584418
合計面積				157.7922090
地積				157.79 m <sup>2</sup>

地番	801-30			
NO	Xn	Yn	Yn+1-Yn-1	Xn · (Yn+1-Yn-1)
R666	-118377.168	-6351.722	-4.326	512099.628768
R667	-118379.612	-6351.988	4.060	-480621.224720
R668	-118380.102	-6347.662	0.266	-31489.107132
合計				-10.703084
合計面積				5.3515420
地積				5.35 m <sup>2</sup>

作成者	大津市丸の内2番10番 土地家屋調査士 井門 寛 	フレアジェイA-3 (平成 29 年 6 月 2 日作成)	申請人	株式会社フジタ 代表取締役 奥村洋治	縮尺	1/
-----	--	----------------------------------	-----	-----------------------	----	----

地番	801-10~801-43	<b>地積測量図</b> <span style="border: 1px solid black; border-radius: 50%; padding: 2px;">7/8</span>
土地の所在	大津市関津四丁目字軌貫	

地番	801-31			
NO	Xn	Yn	Yn+1-Yn-1	Xn · (Yn+1-Yn-1)
R668	-118380.102	-6347.662	-11.807	1397713.864314
R667	-118379.612	-6351.988	-5.564	658664.161168
R669	-118390.530	-6353.226	-1.469	173915.688570
R671	-118392.572	-6353.457	14.689	-1739068.490108
R672	-118394.259	-6338.537	15.374	-1820193.337866
Z573	-118390.261	-6338.083	-1.644	194633.589084
Z274	-118385.508	-6340.181	-9.579	1134014.781132
			合計	-319.743706
			合計面積	159.8718530
			地積	159.87 m <sup>2</sup>

地番	801-35			
NO	Xn	Yn	Yn+1-Yn-1	Xn · (Yn+1-Yn-1)
R688	-118425.363	-6357.161	-16.591	1964795.197533
R694	-118432.284	-6357.942	-1.403	166160.494452
R698	-118437.789	-6358.564	17.012	-2014863.666468
R699	-118438.047	-6340.930	17.805	-2108789.426835
R693	-118427.751	-6340.759	-0.430	50923.932930
R692	-118427.742	-6341.360	-0.592	70109.223264
R691	-118427.149	-6341.351	-15.801	1871267.381349
			合計	-396.863775
			合計面積	198.4318875
			地積	198.43 m <sup>2</sup>

地番	801-32			
NO	Xn	Yn	Yn+1-Yn-1	Xn · (Yn+1-Yn-1)
R671	-118392.572	-6353.457	-15.868	1878653.332496
R678	-118400.968	-6354.405	-1.235	146225.195480
R679	-118403.502	-6354.692	14.628	-1732006.427256
R680	-118405.187	-6339.777	16.155	-1912835.795985
R672	-118394.259	-6338.537	-13.680	1619633.463120
			合計	-330.232145
			合計面積	165.1160725
			地積	165.11 m <sup>2</sup>

地番	801-36			
NO	Xn	Yn	Yn+1-Yn-1	Xn · (Yn+1-Yn-1)
R698	-118437.789	-6358.564	18.191	-2154501.819699
R699	-118438.047	-6340.930	17.450	-2066743.920150
R700	-118449.047	-6341.114	-6.704	794082.411088
H8	-118448.951	-6347.634	-6.477	767193.855627
NN6	-118447.110	-6347.591	-10.035	1188616.748850
NN10	-118444.935	-6357.669	-11.753	1392083.321055
H7	-118444.695	-6359.344	-1.452	171981.697140
R697	-118442.723	-6359.121	0.780	-92385.323940
			合計	326.969971
			合計面積	163.4849855
			地積	163.48 m <sup>2</sup>

地番	801-33			
NO	Xn	Yn	Yn+1-Yn-1	Xn · (Yn+1-Yn-1)
R679	-118403.502	-6354.692	-15.807	1871604.156114
R684	-118411.407	-6355.584	-1.234	146119.676238
R683	-118414.433	-6355.926	15.018	-1778347.954794
R682	-118416.165	-6340.566	15.439	-1828227.171435
R681	-118411.447	-6340.487	0.789	-93426.631683
R680	-118405.187	-6339.777	-14.205	1681945.681335
			合計	-332.244225
			合計面積	166.1221125
			地積	166.12 m <sup>2</sup>

地番	801-37			
NO	Xn	Yn	Yn+1-Yn-1	Xn · (Yn+1-Yn-1)
H8	-118448.951	-6347.634	6.753	-799885.766103
R700	-118449.047	-6341.114	6.359	-753217.489873
R705	-118458.669	-6341.275	-0.227	26890.117863
R706	-118459.084	-6341.341	-6.592	780882.281728
H9	-118458.988	-6347.867	-6.293	745462.411484
			合計	131.555099
			合計面積	65.7775495
			地積	65.77 m <sup>2</sup>

地番	801-34			
NO	Xn	Yn	Yn+1-Yn-1	Xn · (Yn+1-Yn-1)
R683	-118414.433	-6355.926	-16.197	1917958.571301
R687	-118421.845	-6356.763	-1.235	146250.978575
R688	-118425.363	-6357.161	15.412	-1825171.694556
R691	-118427.149	-6341.351	15.818	-1873280.642882
R690	-118426.538	-6341.343	0.612	-72477.041256
R689	-118426.553	-6340.739	0.777	-92017.431681
R682	-118416.165	-6340.566	-15.187	1798386.297855
			合計	-350.962644
			合計面積	175.4813220
			地積	175.48 m <sup>2</sup>

地番	801-38			
NO	Xn	Yn	Yn+1-Yn-1	Xn · (Yn+1-Yn-1)
H9	-118458.988	-6347.867	6.701	-793793.678588
R706	-118459.084	-6341.341	5.241	-620844.059244
H10	-118467.295	-6342.626	-6.701	793849.343795
NN7	-118466.485	-6348.042	-5.241	620882.847885
			合計	94.453848
			合計面積	47.2269240
			地積	47.22 m <sup>2</sup>

作成者	大津市丸の内町2番1号 土地家屋調査士 井門 寛 	フレアジェイA-3 (平成 29 年 6 月 2 日作成)	申請人	株式会社フジタ 代表取締役 奥村洋治	縮尺	1/
-----	---------------------------------	----------------------------------	-----	-----------------------	----	----

地番	801-10~801-43	<b>地積測量図</b> <span style="border: 1px solid black; border-radius: 50%; padding: 2px;">8/8</span>
土地の所在	大津市関津四丁目字鈺貫	

地番	801-39			
NO	Xn	Yn	Yn+1-Yn-1	Xn · (Yn+1-Yn-1)
R690	-118426.538	-6341.343	-0.612	72477.041256
R691	-118427.149	-6341.351	-0.017	2013.261533
R692	-118427.742	-6341.360	0.592	-70109.223264
R693	-118427.751	-6340.759	0.621	-73543.633371
R689	-118426.553	-6340.739	-0.584	69161.106952
合計				-1.446894
合計面積				0.7234470
地積				0.72 m <sup>2</sup>


地番	801-40			
NO	Xn	Yn	Yn+1-Yn-1	Xn · (Yn+1-Yn-1)
Z274	-118385.508	-6340.181	8.438	-998936.916504
R674	-118393.622	-6329.645	7.677	-908907.836094
R675	-118397.964	-6332.504	-4.437	525331.766268
R676	-118411.899	-6334.082	-2.366	280162.553034
R707	-118459.216	-6334.870	-2.163	256227.284208
H11K	-118468.019	-6336.245	-5.448	645413.767512
NN4	-118467.640	-6340.318	-6.381	755942.010840
H10	-118467.295	-6342.626	-1.023	121192.042785
R706	-118459.084	-6341.341	1.351	-160038.222484
R705	-118458.669	-6341.275	0.227	-26890.117863
R700	-118449.047	-6341.114	0.345	-40864.921215
R699	-118438.047	-6340.930	0.355	-42045.506685
R693	-118427.751	-6340.759	0.191	-22619.700441
R689	-118426.553	-6340.739	0.193	-22856.324729
R682	-118416.165	-6340.566	0.252	-29840.873580
R681	-118411.447	-6340.487	0.789	-93426.631683
R680	-118405.187	-6339.777	1.950	-230890.114650
R672	-118394.259	-6338.537	1.694	-200559.874746
Z573	-118390.261	-6338.083	-1.644	194633.589084
合計				1025.973057
合計面積				512.9865285
地積				512.98 m <sup>2</sup>

地番	801-41			
NO	Xn	Yn	Yn+1-Yn-1	Xn · (Yn+1-Yn-1)
R674	-118393.622	-6329.645	5.196	-615173.259912
R714	-118395.306	-6327.308	-0.488	57776.909328
NK266	-118412.140	-6330.133	-3.827	453163.259780
NS16	-118414.852	-6331.135	-2.234	264538.779368
NS17	-118424.782	-6332.367	-1.303	154307.490946
NS18	-118436.638	-6332.438	0.026	-3079.352588
NS19	-118448.182	-6332.341	-0.753	89191.481046
NS20	-118468.114	-6333.191	-2.670	316309.864380
NN2	-118468.134	-6335.011	-3.054	361801.681236
H11K	-118468.019	-6336.245	0.141	-16703.990679
R707	-118459.216	-6334.870	2.163	-256227.284208
R676	-118411.899	-6334.082	2.366	-280162.553034
R675	-118397.964	-6332.504	4.437	-525331.766268
合計				411.259395
合計面積				205.6296975
地積				205.62 m <sup>2</sup>

地番	801-42			
NO	Xn	Yn	Yn+1-Yn-1	Xn · (Yn+1-Yn-1)
K797.2	-118332.723	-6413.577	1.267	-149927.560041
DM6	-118333.302	-6412.578	0.742	-87803.310084
DM5	-118362.291	-6412.835	-1.264	149609.935824
DM4	-118378.614	-6413.842	-1.414	167387.360196
F167	-118382.256	-6414.249	5.274	-624348.018144
F163-1	-118382.896	-6408.568	5.502	-651342.693792
F163	-118383.957	-6408.747	-6.802	805247.675514
F164	-118383.230	-6415.370	-6.087	720598.721010
D203	-118378.520	-6414.834	1.525	-180527.243000
D202	-118362.231	-6413.845	1.257	-148781.324367
合計				113.543116
合計面積				56.7715580
地積				56.77 m <sup>2</sup>

地番	801-43			
NO	Xn	Yn	Yn+1-Yn-1	Xn · (Yn+1-Yn-1)
K797.1	-118328.700	-6411.366	11.283	-1335102.722100
R723	-118334.510	-6402.294	6.178	-731070.602780
R722	-118338.514	-6405.188	-9.104	1077353.831456
Z55	-118334.021	-6411.398	-7.390	874488.415190
DM6	-118333.302	-6412.578	-2.179	257848.265058
K797.2	-118332.723	-6413.577	1.212	-143419.260276
合計				97.926548
合計面積				48.9632740
地積				48.96 m <sup>2</sup>

総合計面積	7462.5784535 m <sup>2</sup>
-------	-----------------------------

作成者	大津市丸の内 土地家屋調査士 井門 寛 	フレアジェイA-3 (平成 29 年 6 月 2 日作成)	申請人	株式会社フジタ 代表取締役 奥村洋治	縮尺	1/
-----	---	----------------------------------	-----	-----------------------	----	----